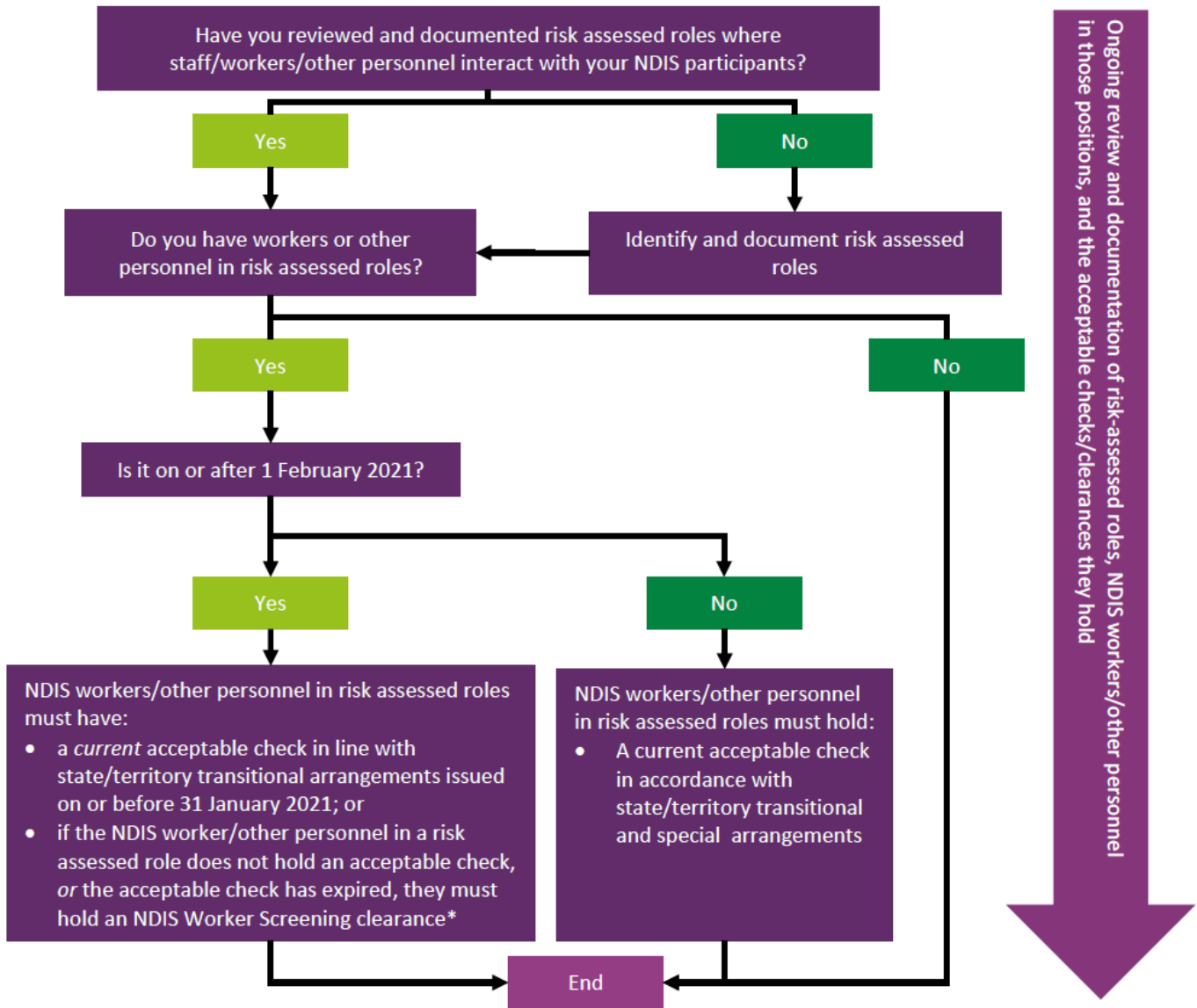




Registered NDIS providers: Worker screening checks required

This flowchart explains the worker screening checks or clearances that must be in place if you are a registered NDIS provider supporting NDIS participants with workers in risk assessed roles.



* In some states or territories, local laws may, in certain circumstances, permit a registered NDIS provider to allow a worker to begin working in a risk assessed role after they apply for a Worker Screening Check but before they have been granted a clearance.

If the laws of your state or territory allow you to engage the worker in a risk assessed role after submitting an application, but before an outcome has been issued, you must have appropriate safeguards in place.

For more information, refer to:

- [NDIS \(Practice Standards\) Worker Screening Rules 2018](#)
- NDIS Worker Screening requirements on the [NDIS Commission](#) website